



# MONTHLY MEMBERSHIP PROGRESS REPORT

District N 3

Results as of: 01/31/2019

GMT: CHRIS LEWIS

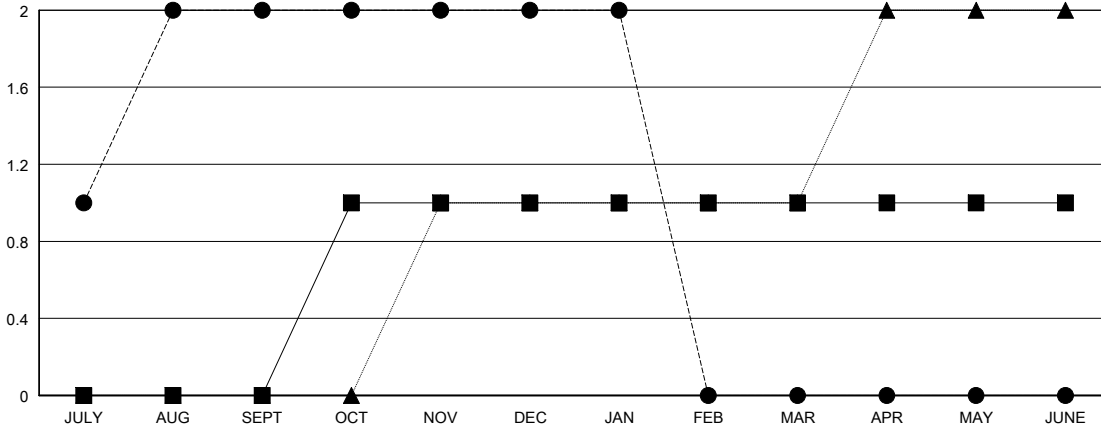
LOCATION NEWFOUNDLAND-LABRADOR

GMT CA

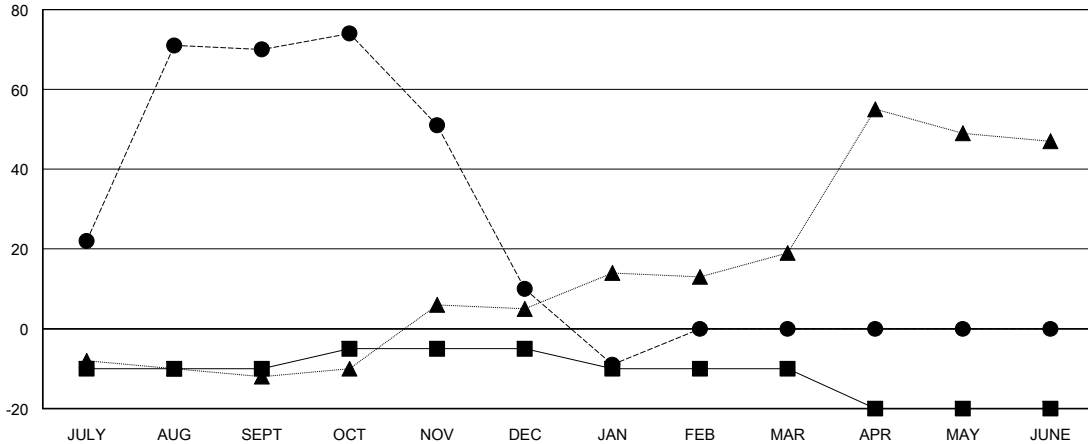
Clubs			
RESULTS FOR 2018-2019			
QUARTER	NEW CLUB GOAL	NEW CLUBS	DROPPED CLUBS
JULY/AUG/SEPT	0	2	0
OCT/NOV/DEC	1	0	1
JAN/FEB/MAR	0	0	0
APR/MAY/JUNE	0	0	0

Members			
RESULTS FOR 2018-2019			
QUARTER	MEMBER GROWTH NET GOAL	MEMBER GROWTH ACTUAL	DROPPED MEMBERS ACTUAL (including transfers)
JULY/AUG/SEPT	-10	98	27
OCT/NOV/DEC	5	15	75
JAN/FEB/MAR	-5	13	32
APR/MAY/JUNE	-10	0	0

GOALS AND ACTUAL NEW CLUBS CUMULATIVE



GOALS AND ACTUAL MEMBERS CUMULATIVE



DROPPED CLUBS: 1	19 CLUBS OF 43 ADDED 1 OR MORE NEW MEMBERS	<u>GENDER DISTRIBUTION</u> MALE 649 (61.23%) FEMALE 411 (38.77%) Women Percentage Fiscal Year Goal: 36%
<u>DROPPED MEMBERS</u> DECEASED 7 CLUB CANCELLED 5 OTHER 122 TOTAL 134	<a href="#">CLICK HERE FOR CUMULATIVE MEMBERSHIP DATA</a>	TOTAL FAMILY UNIT MEMBERS 226 FAMILY MEMBERS PAYING HALF DUES 115